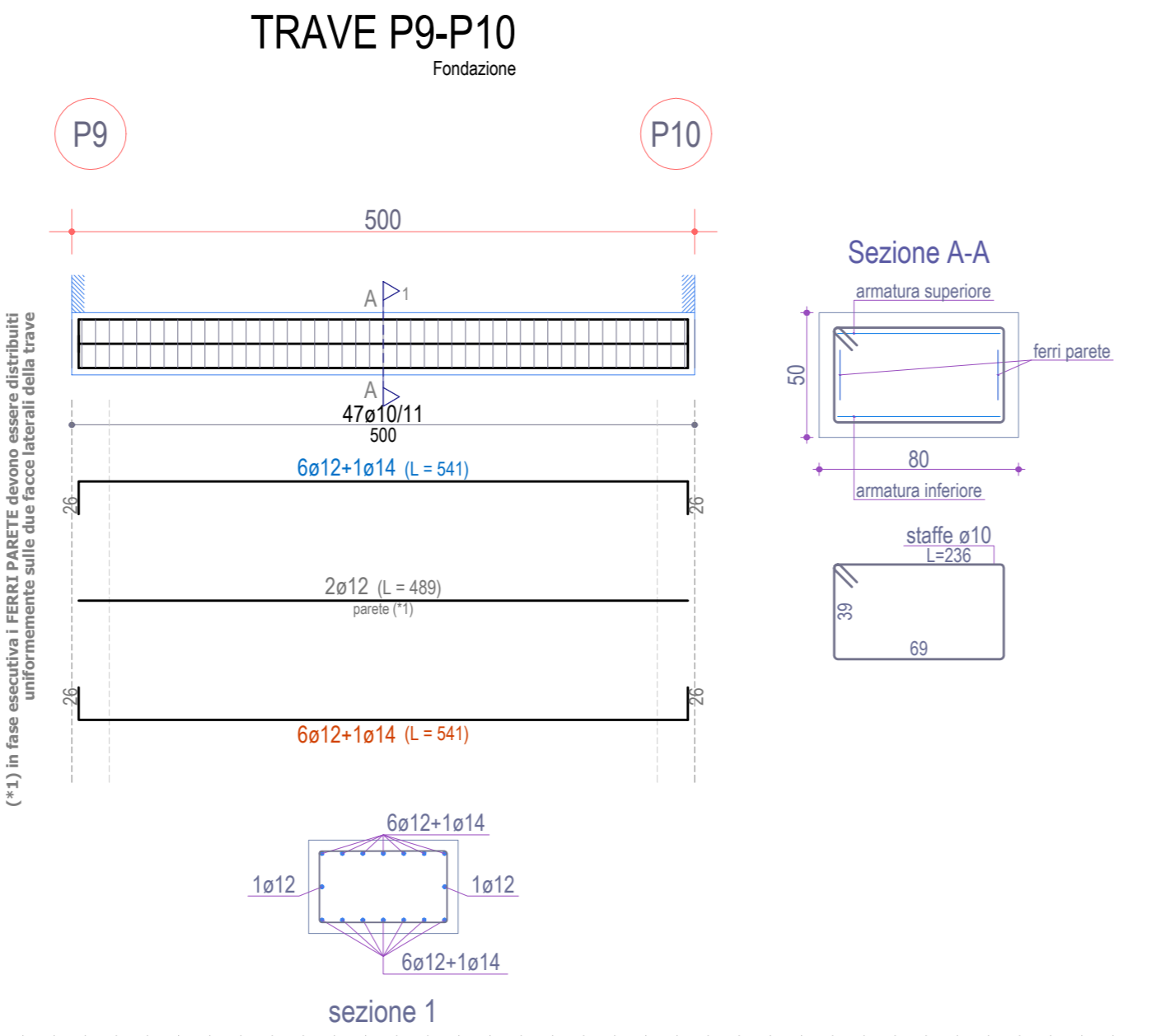
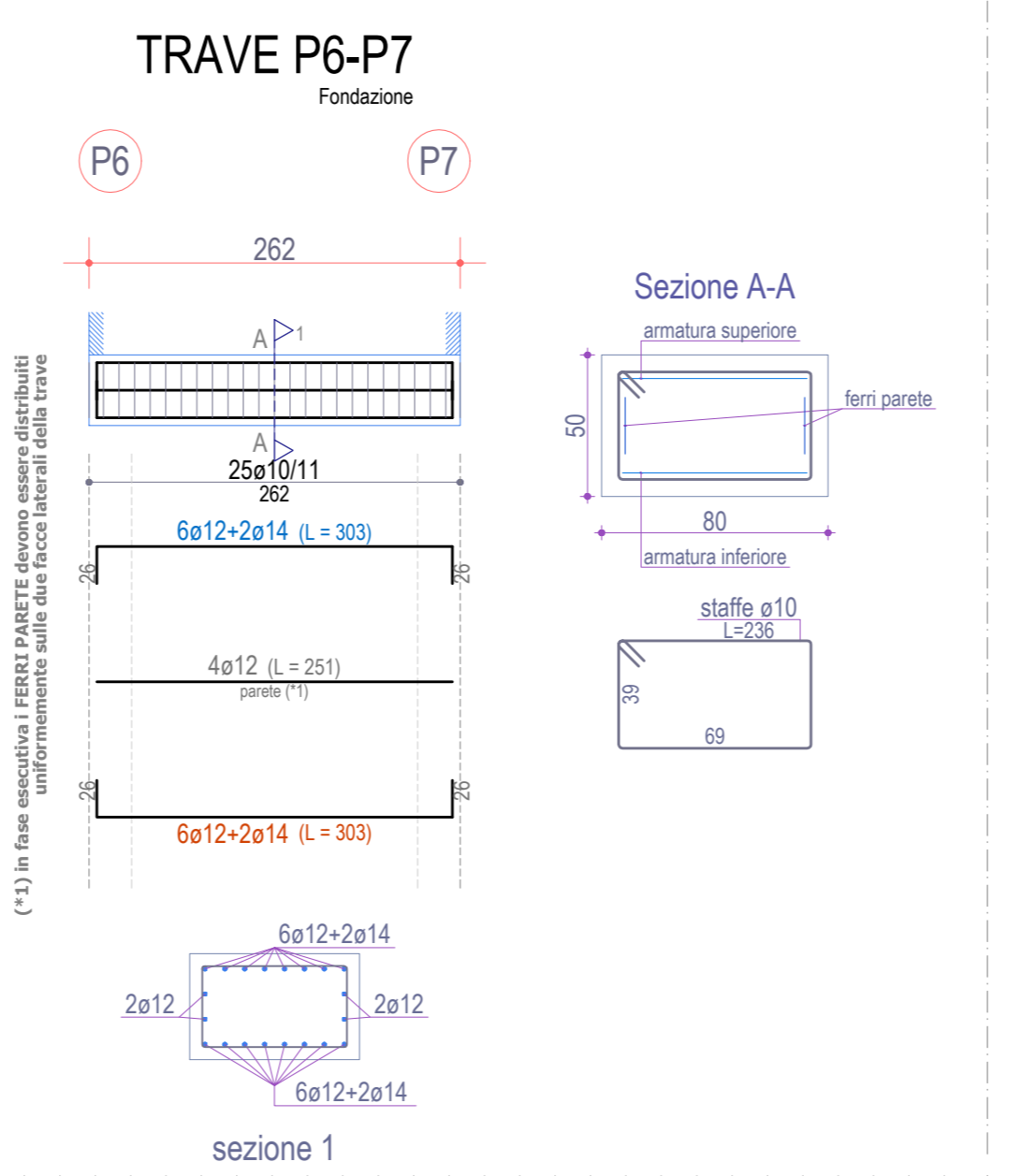


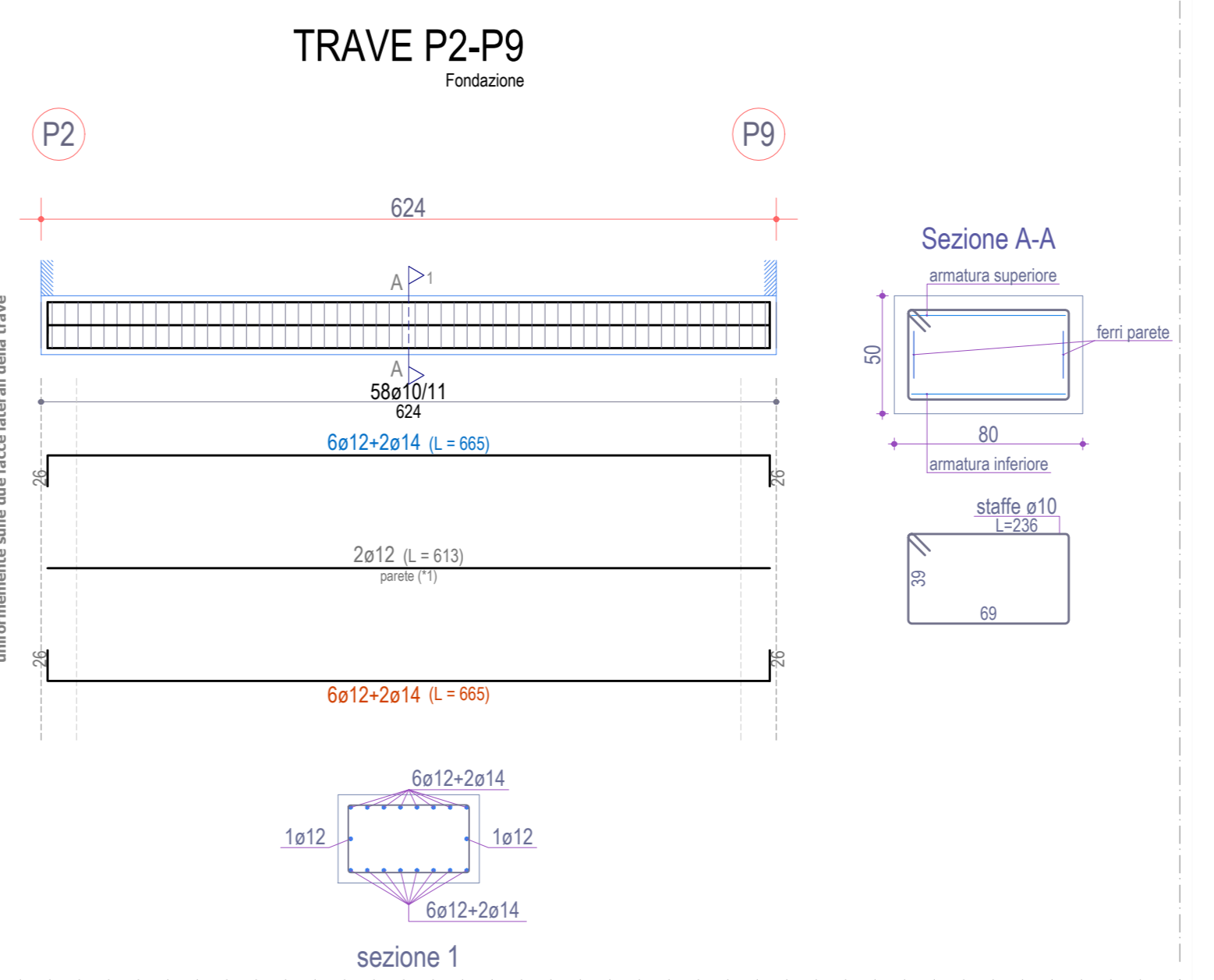
Scala: 1/50



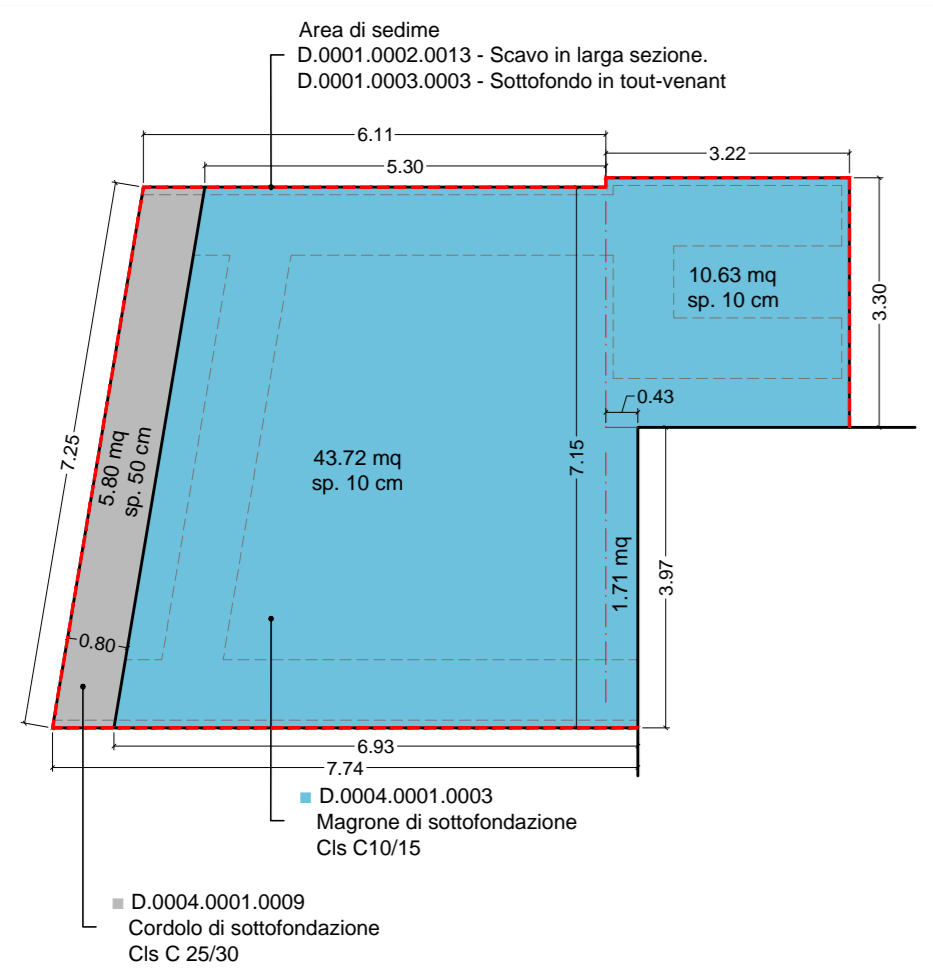
Scala: 1/50



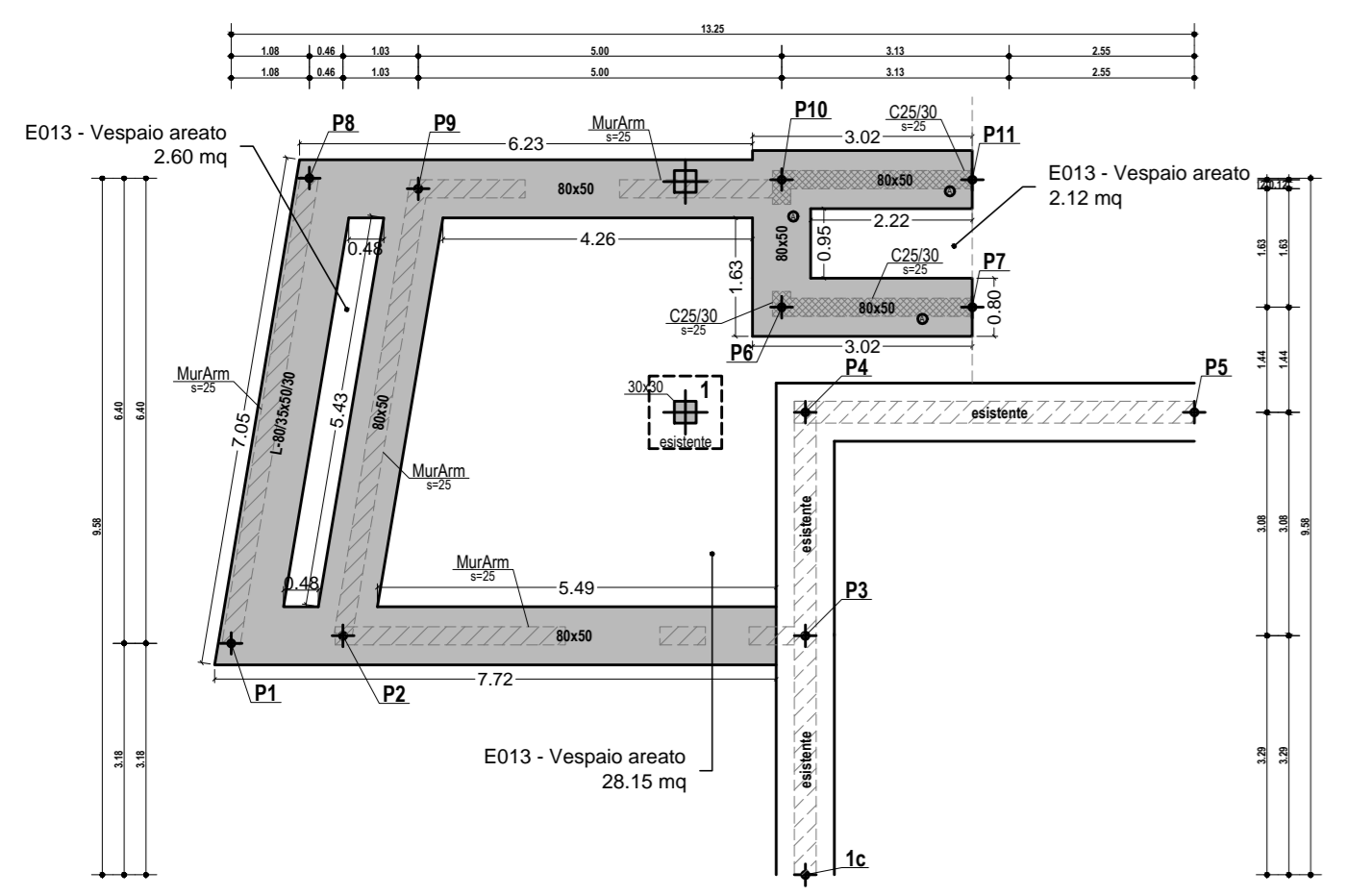
Scala: 1/50



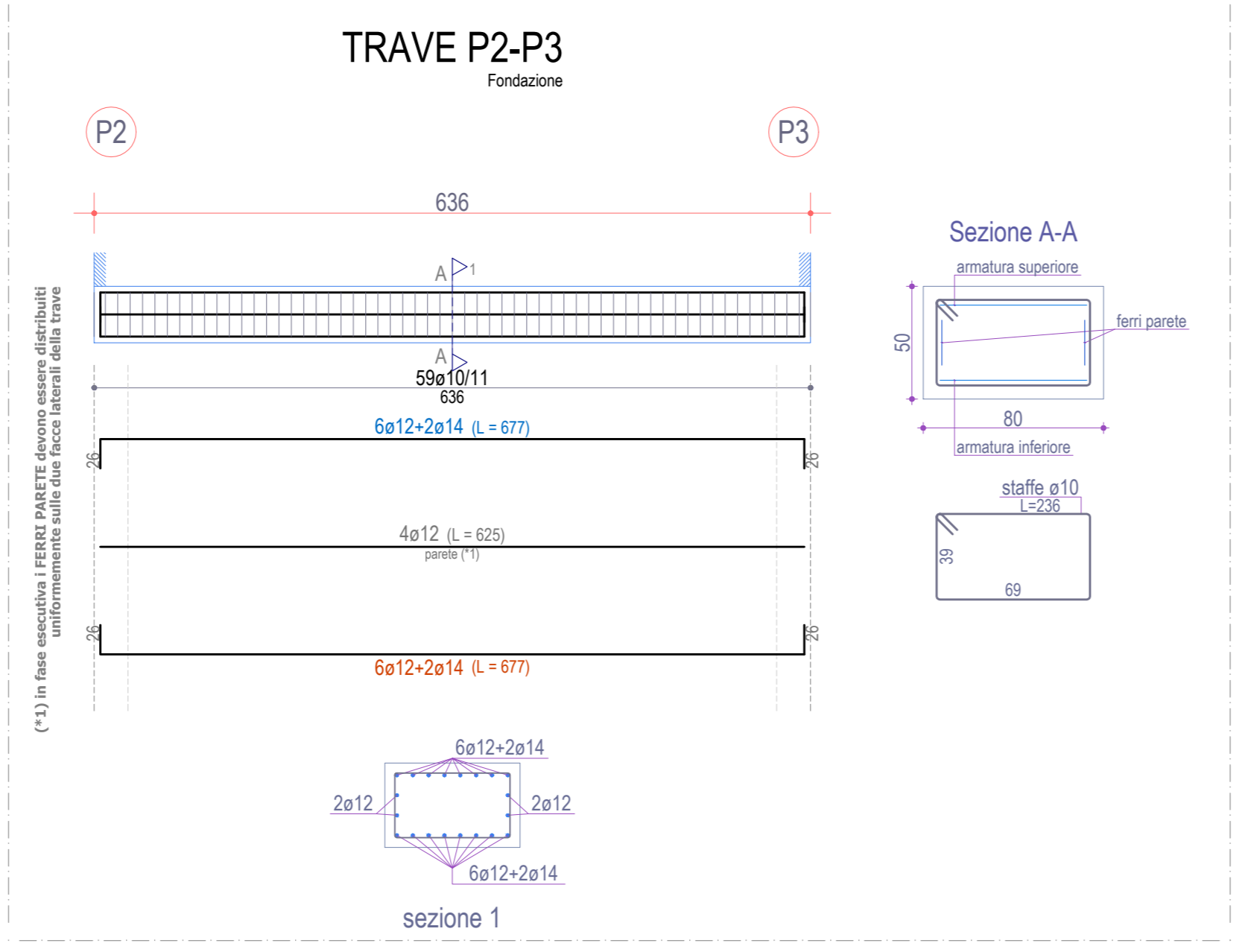
Scala: 1/50



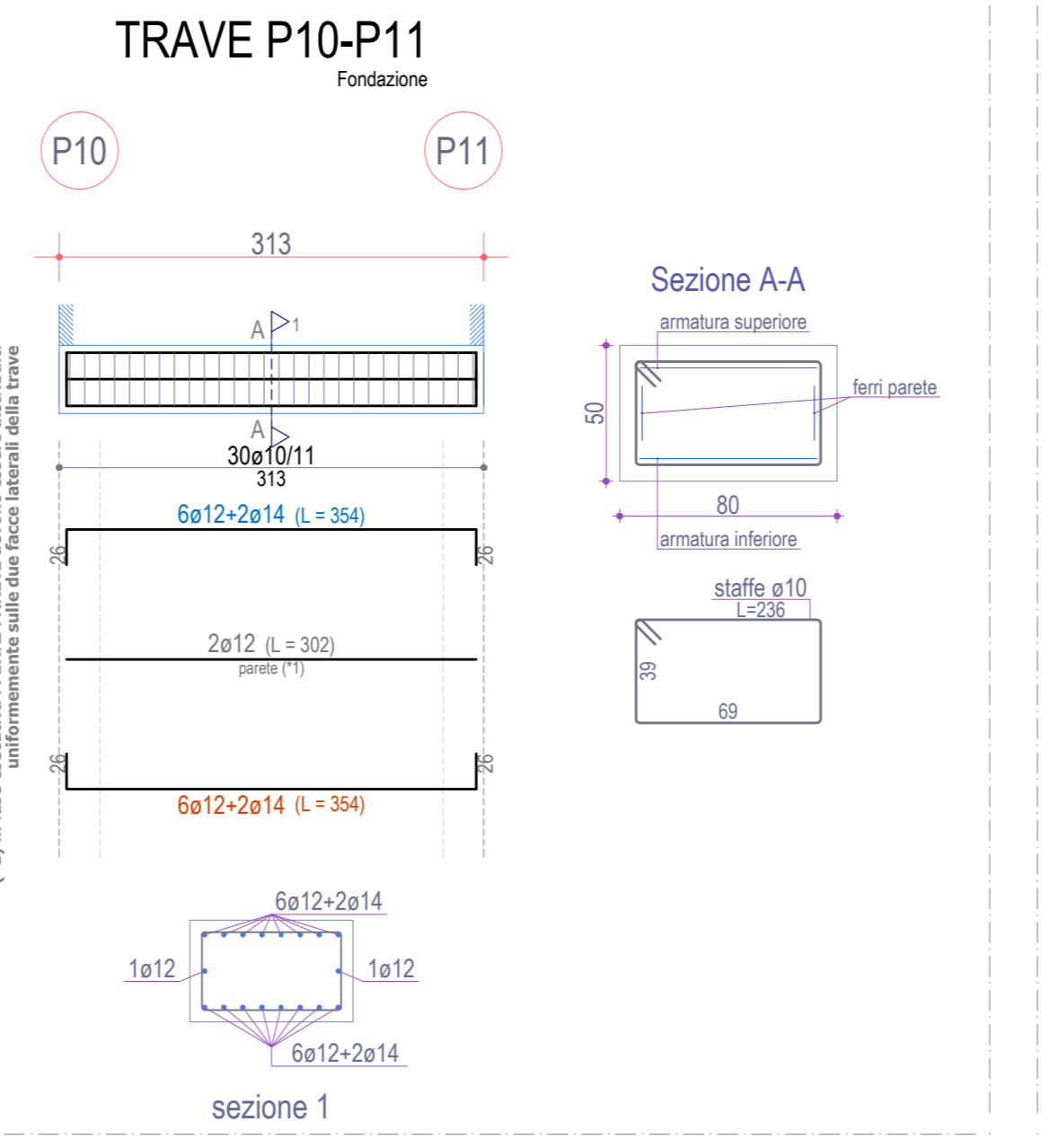
SCHEMA SOTTOFONDAZIONI  
Scala 1:100



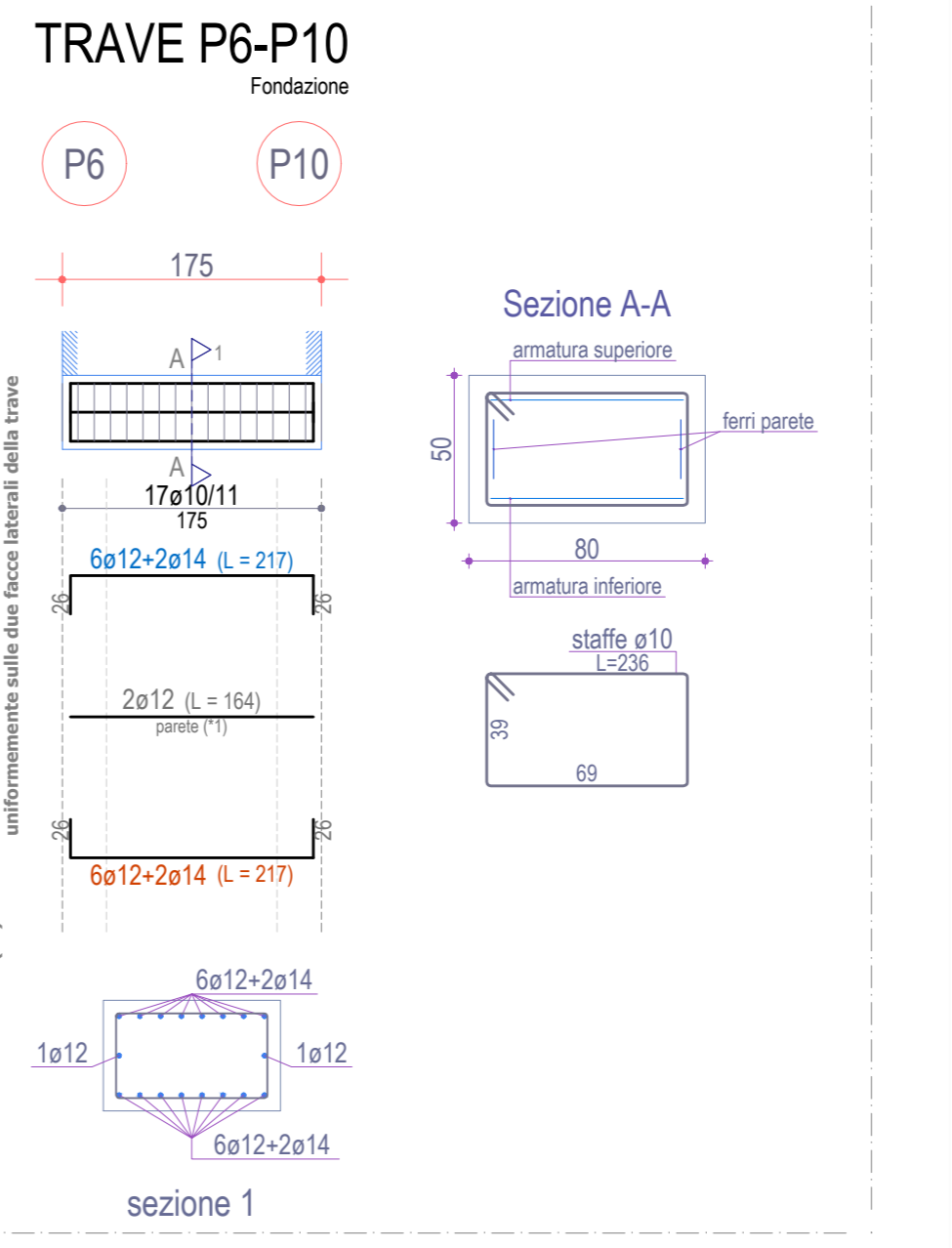
SCHEMA PIANTA FONDAZIONI  
Scala 1:100



Scala: 1/50



Scala: 1/50



Scala: 1/50

COMUNE DI VILLA SANT'ANTONIO PROVINCIA DI ORISTANO

PROGETTO DEFINITIVO  
MANUTENZIONE E AMPLIAMENTO CASA DI RIPOSO

Studio Tecnico Associato  
**Ing.ri Orgiana A. & Orrù G.**  
Via G. Battisti 21/A - 09030 ORROLI (CA) - Tel./Fax 0782-847472

ELABORATI STRUTTURALI:  
- PIANTA FONDAZIONI

TAVOLA N° 6a  
SCALA Varie  
DATA Dic. 2016

Il Sindaco:  
Fabiano Frongia

Progettisti:  
Studio Tecnico Associato  
Ing.ri Orgiana A. & Orrù G.

Il Responsabile  
del Servizio Tecnico  
Geom. Rossella Ardu

Il Coordinatore:  
Dr. Ing. Antonio Orgiana